



DESF-48-200HP

Electric Class III Hawser Winch

The DESF-48-200HP is a high-performance, three-speed 200HP single-drum electric hawser winch with automatic Render/Recover capabilities, adjustable tension and line scope (length) set-points, and a dynamic high-speed water-cooled slip-brake. Constant tension control permits full hands-free operation, with active line-tension monitoring during all winch activities.

Winch System Specifications

- ◆ Drum Capacity: 700 feet / 213 meters of 9.0" circumference / 72 mm diameter synthetic line
- ◆ Performance: 456,000 lbs / 2030 kN line pull - 700 feet per minute / 210 meters per minute
- ◆ Max Freewheel Speed: 1000+ ft/min / 300+ m/min
- ◆ Electric Motor & Drive: 200 HP / 149kW AC-variable frequency drive with three-speed transmission
- ◆ Winch Braking: Below-deck water-cooled multi-disc brake - 607,000 lbs / 2700kN
- ◆ Winch Control: Wheelhouse controls with emergency stop and freewheel pushbuttons. Line tension display available at all times whether operating the brake or the electric drive.
- ◆ Power Requirements: 460 VAC 3 Phase, 60Hz. Other source voltage options available.
- ◆ Weight: 65,000 lbs / 29,500 kg



Markey Machinery Company, Inc.

7266 8th Avenue South, Seattle, WA 98108

Ph: (206) 622-4697 Toll Free: (800) 637-3430 Fax: (206) 623-9839

Email: info@markeymachinery.com

Represented by:

Griffin & Associates

355 Grow Avenue NW, Bainbridge Island, WA 98110 (USA)

Ph: (206) 595-9507 Email: bagriffin@griffinassociates.com



ISO 9001:2008 QMS

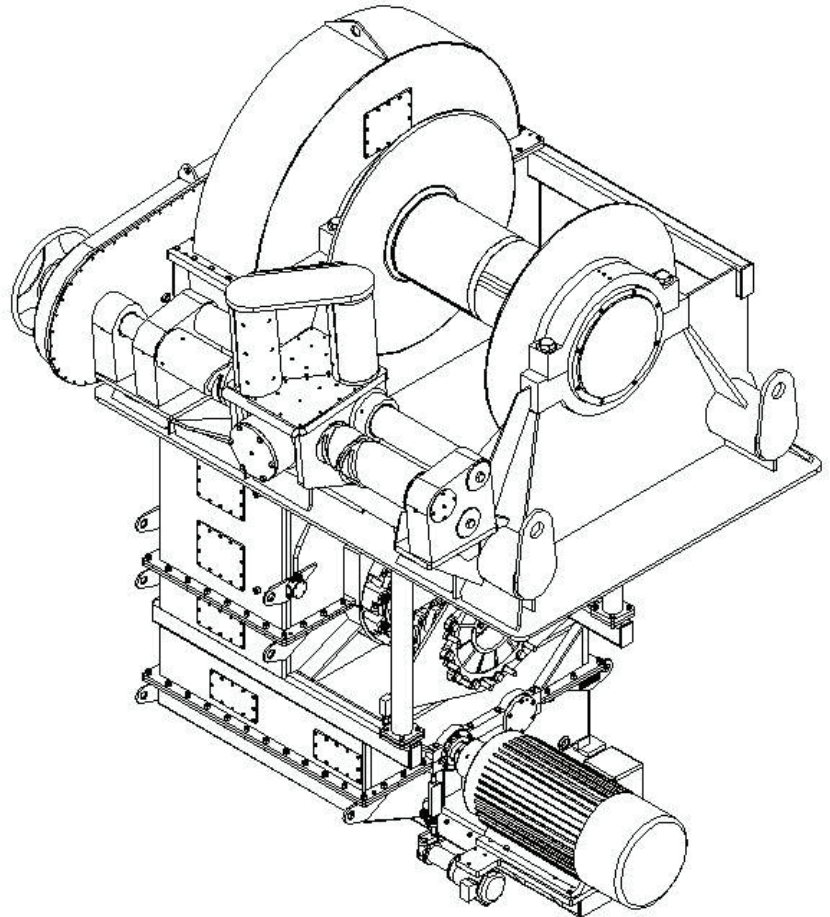
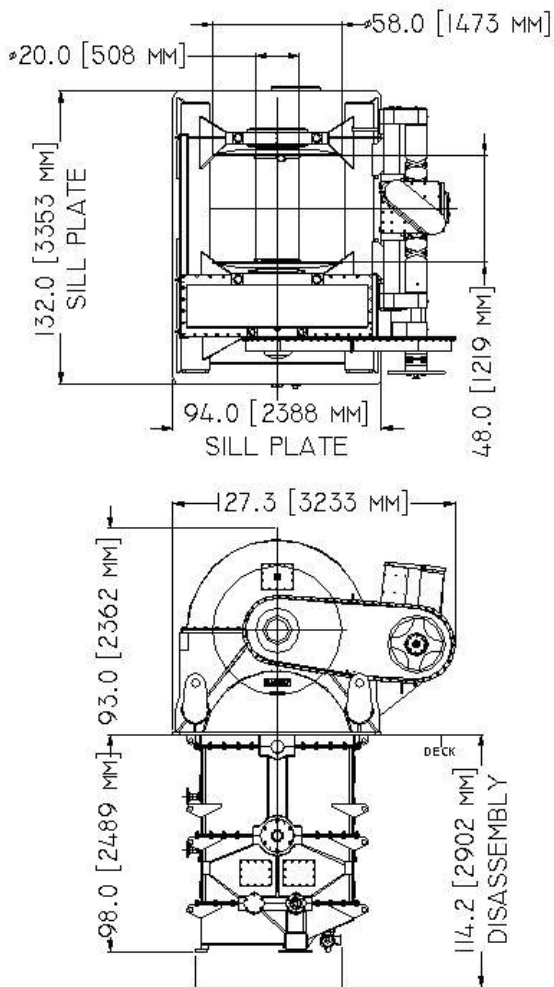
Represented by:

JH Menge & Company, Inc.

5825 Plouche Street, Harahan, LA 70123 (USA)

Ph: (504) 733-4871 Email: folatour@jhmenge.com

Markey DESF-48-200 Winch



Markey's Class III hawser winches feature a unique and proprietary "Render/Recover" control system, which automatically maintains a manually set line tension. The line tension can be set from a practical minimum of about 5 tons to the tugboat's maximum operational value, including "indirect" loads above bollard pull. It allows the tugmaster to focus on tug maneuvering. These winches can also absorb the effect of wave induced tug motions and allow effective operation in more difficult sea states. Since their introduction in 2002 the Markey Class III electric (low noise) hawser winches have proven themselves to be without equal in allowing the use of the full capability of modern Z-drive and Voith-Schneider propulsion tugs.

Hawser Winch System Options

- ◆ R/R autoshift set up standard, ARR set up optional
- ◆ Digital/Analog Line Tension Display System
- ◆ Multiple Station Controls
- ◆ Performance ratings can be tailored to suit specific applications
- ◆ Other drum options are available

Markey's rugged winches are built to the highest quality workboat standards using materials and processes providing maximum life and minimum maintenance in marine and outdoor applications.

© 2011 MMCo 20075

