



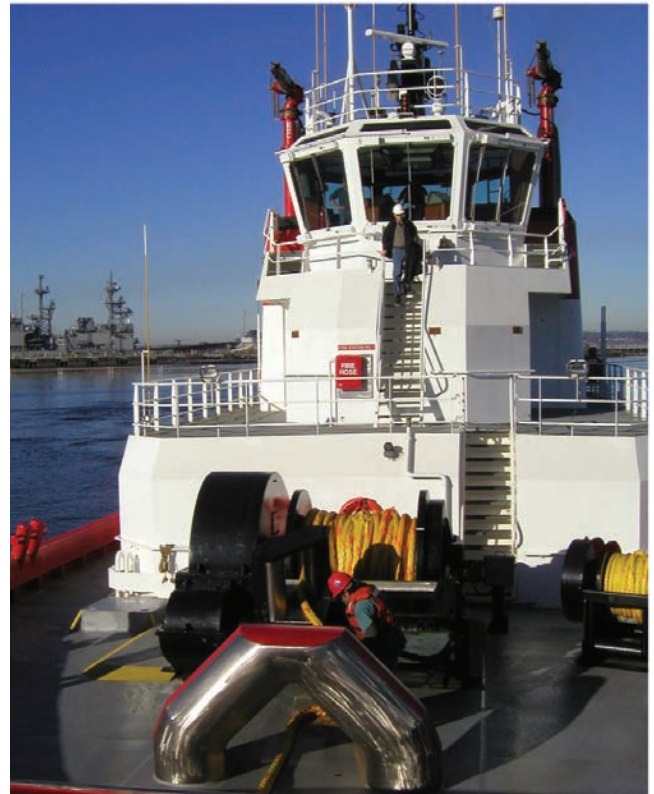
# DESS-52-250HP

## Electric Class III Hawser Winch

The DESS-52-250HP is a high-performance, three-speed 250HP single-drum electric hawser winch with automatic Render/Recover capabilities, adjustable tension and line scope (length) set-points, and a dynamic high-speed water-cooled slip-brake. Constant tension control permits full hands-free operation, with active line-tension monitoring during all winch activities.

### Winch System Specifications

- ◆ Max. Drum Capacity: 1000 feet / 305 meters of 10.0" circumference / 80 mm diameter synthetic line.
- ◆ Rated Performance: 440,000 lbs / 1957 kN (continuous) rating / max line-speed of 800 ft/min / 244 m/min
- ◆ Max Freewheel Speed: 1000+ ft/min / 305 m/min
- ◆ Electric Motor & Drive: 250HP / 187kW AC-variable frequency drive (75HP / 56kW at reduced power). 3-speed transmission.
- ◆ Winch Braking: Below-deck water-cooled multi-disc brake with holding capacity to 660,000 lbs.
- ◆ Winch Control: Wheelhouse controls with on-deck emergency stop and freewheel pushbuttons. Line tension display available at all times whether operating the brake or the electric drive.
- ◆ Power Requirements: 460 VAC 3 Phase, 60Hz. Other source voltage options available.
- ◆ Weight: 112,000 lbs / 50,802 kg



## Markey Machinery Company, Inc.

7266 8th Avenue South, Seattle, WA 98108

Ph: (206) 622-4697 Toll Free: (800) 637-3430 Fax: (206) 623-9839

Email: [info@markeymachinery.com](mailto:info@markeymachinery.com)

Represented by:

**Griffin & Associates**

355 Grow Avenue NW, Bainbridge Island, WA 98110 (USA)

Ph: (206) 595-9507 Email: [bagriffin@griffinassociates.com](mailto:bagriffin@griffinassociates.com)

**MARKEY**

ISO 9001:2008 QMS

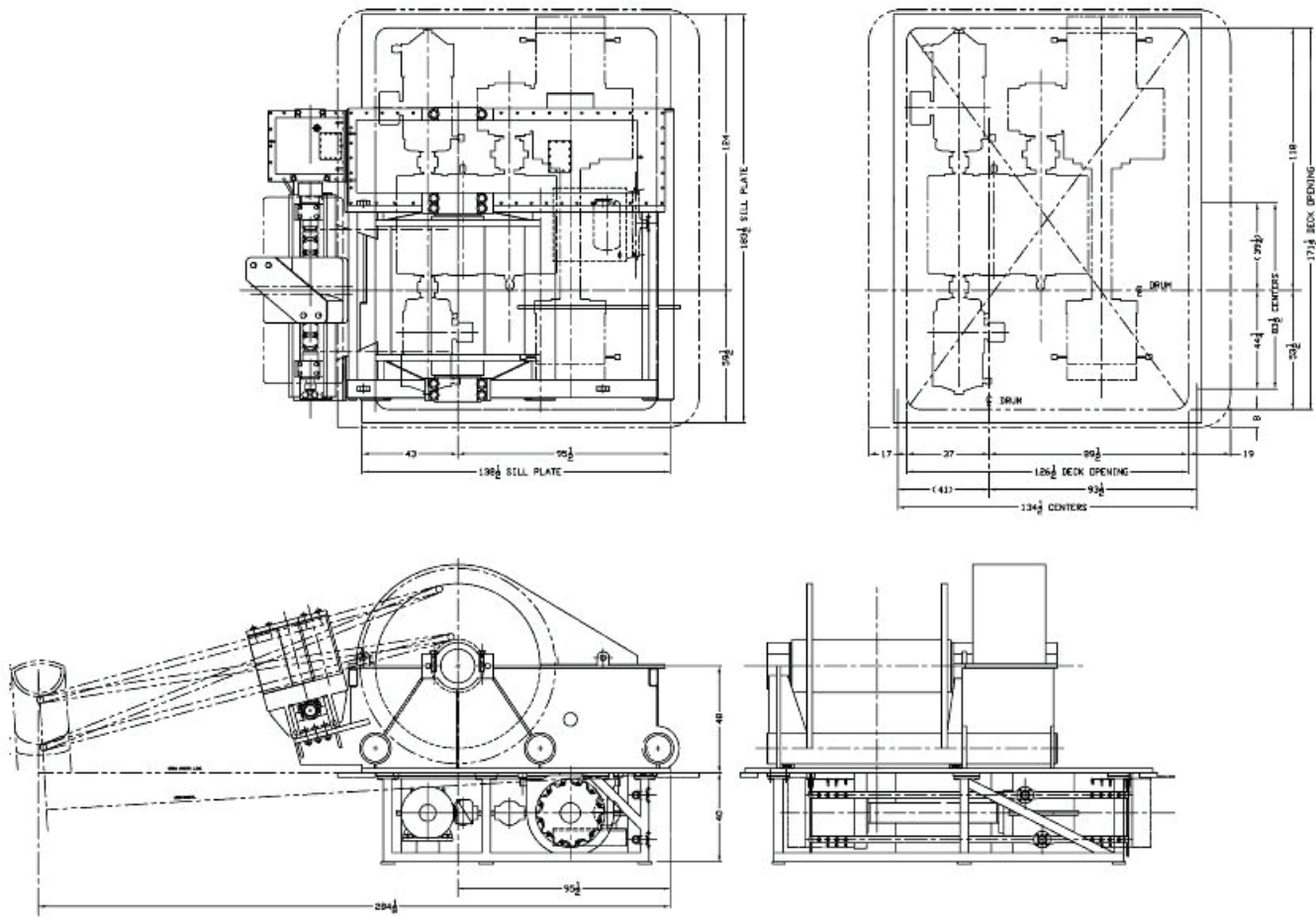
Represented by:

**JH Menge & Company, Inc.**

5825 Plache Street, Harahan, LA 70123 (USA)

Ph: (504) 733-4871 Email: [folatour@jhmenge.com](mailto:folatour@jhmenge.com)

# Markey DESS-52-250HP



There isn't another winch in the world that comes close to matching the capabilities of the DESS-52 high-performance ARR electric hawser winch installed on the Crowley VSP tug "Response". The winch offers fully automatic Render/Recover performance up to 100% of the tug's bollard-pull (with 660,000 lbs of braking power during escort and ship assist maneuvers), providing the Captain with the ability to devote all his attention to utilizing the tug's maneuvering potential, while the hawser winch does the rest!

## Hawser Winch System Options

- ◆ Digital/Analog Line Tension Display System
- ◆ Multiple Station Controls
- ◆ A variety of source power configurations can be accommodated
- ◆ Electrical hooks in system box for ship's UPS
- ◆ Performance ratings can be tailored to suit specific applications

Markey's rugged winches are built to the highest quality workboat standards using materials and processes providing maximum life and minimum maintenance in marine and outdoor applications.

© 2011 MMCo 18129



*Anything Else is Just a Winch!*